



OPEN ROAD
FURNISHINGS



SALTAIRE
DINING CHAIR

Saltaire Dining Chair

Saltaire features a traditional sleigh-back design with a rolled top edge. Gently curved arms end in an oversized handgrip to assist with ingress and egress. Outside back features distinctive X-frame design.



Saltaire, England

Designated a World Heritage Site, Saltaire is a model village created in 1853 by the Victorian industrialist Sir Titus Salt for his workers. A historical gem, this self-contained community is known for its industrial heritage and spectacular architecture.





FEATURES

- Frames constructed from kiln-dried European Beech hardwood
- Mortise & Tenon joints throughout (no dowels)
- Highly durable, Anti-Microbial stain finish
- Seat construction features Tongue & Groove corner block system
- Glue used is specially formulated for Beech hardwood

OPTIONS

- Custom wood frame finishes
- Contrasting fabrics
- CAL TB 133 Compliance
- Moisture Barrier
- Caster options

STATEMENT OF LINE



Saltaire dining chair with arms

Width: 26.5
Depth: 24
Height: 37.5
Seat Width: 19
Seat Depth: 18
Seat Height: 19.5
Arm Height: 26

WOOD FINISHES



Hardrock Maple (HM)



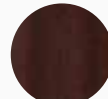
Candlelight (CL)



Rustic Cherry (RC)



Summer Flame (SF)



Mahogany (MA)



Cherry Blossom (CB)



Grenada (GR)



Chocolate (CH)



OPEN ROAD
FURNISHINGS

45 Goodrich Drive,
Kitchener, Ontario N2C 0B8
P: 844-365-2500 F: 877-395-6270
openroadfurnishings.com
A division of Stance Healthcare

